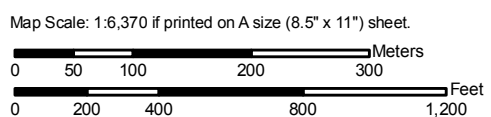
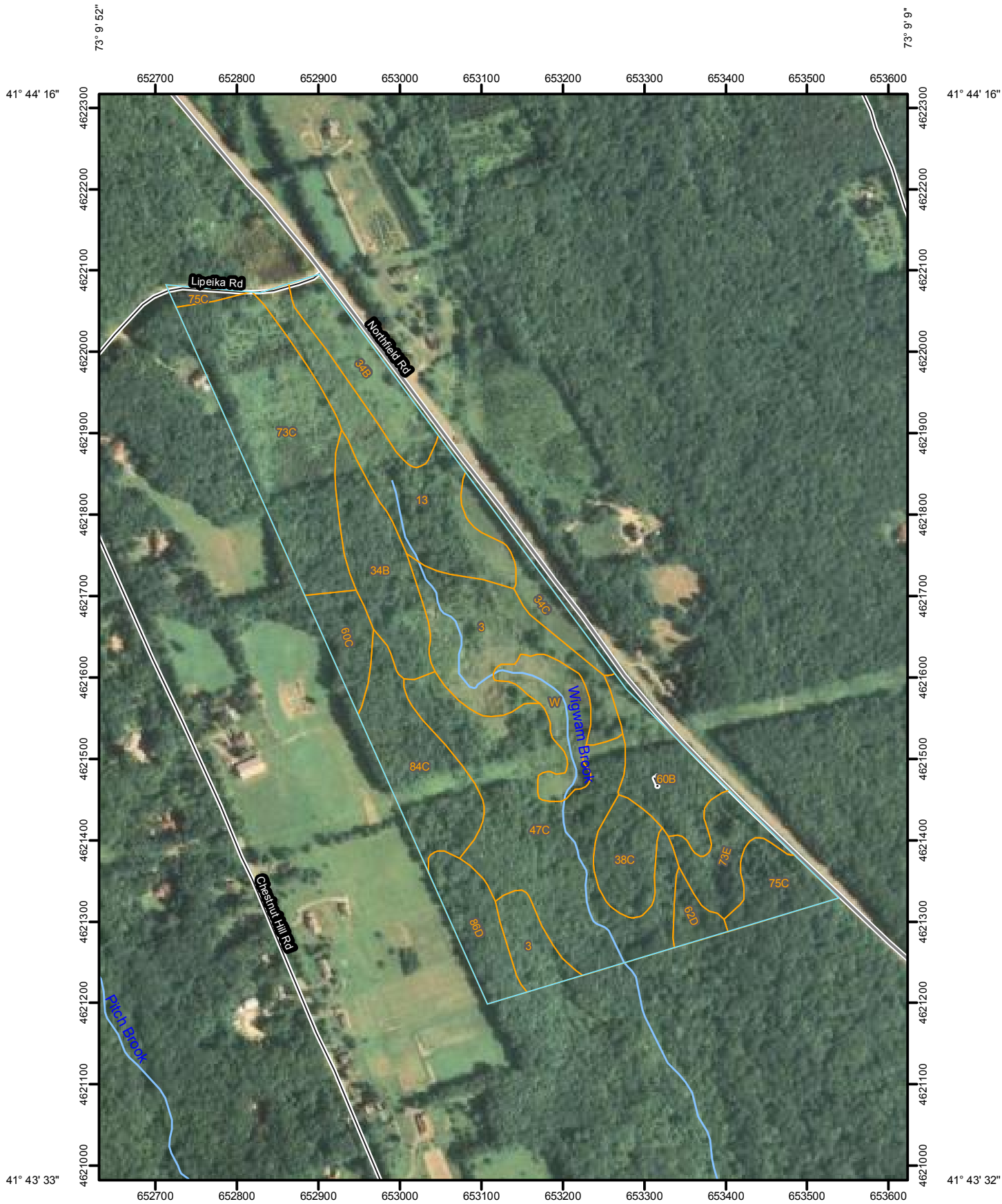


Soil Map—State of Connecticut
(Wigwam Brook Orchard Site)

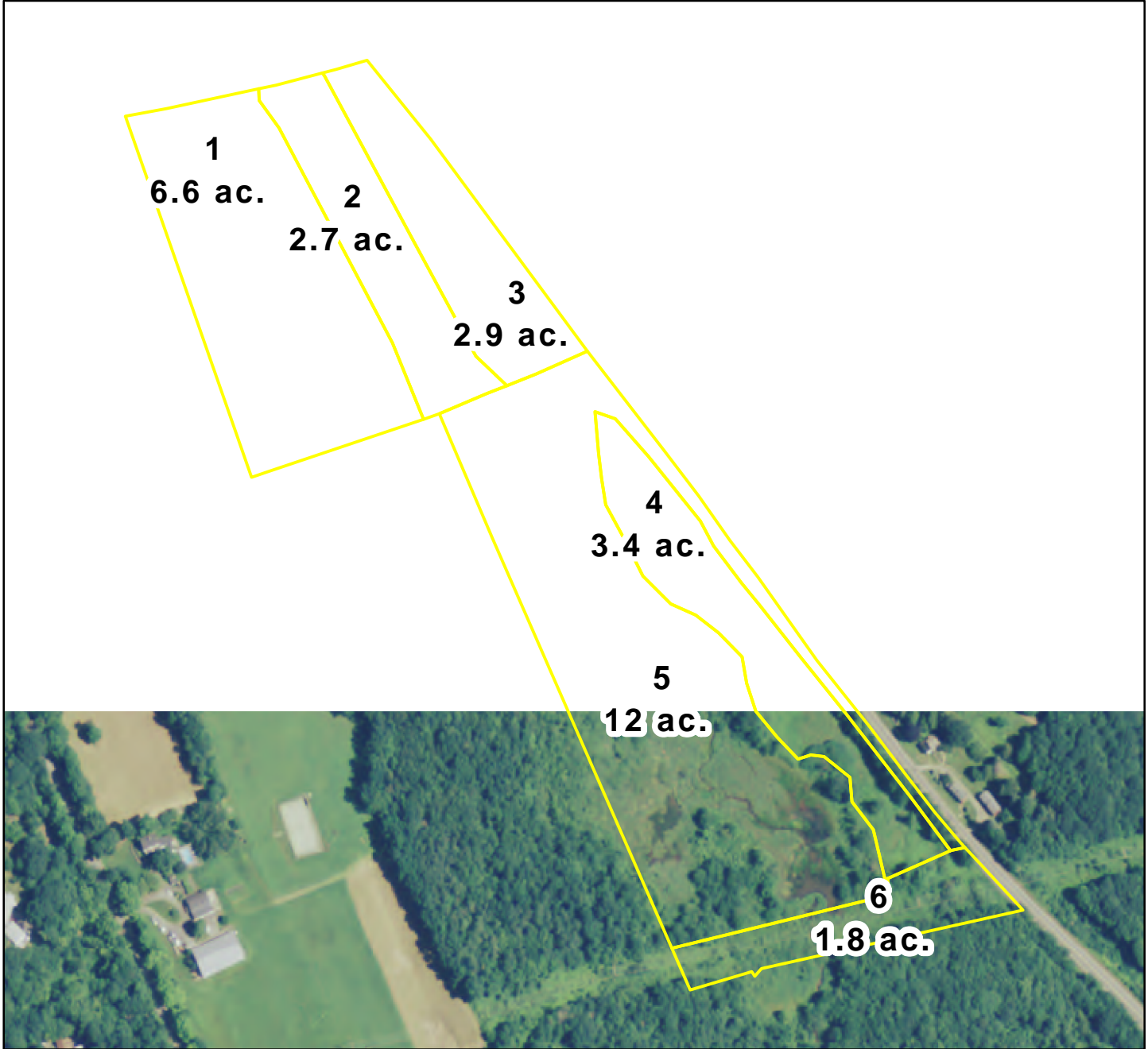


Wigwam Brook WHIP 2009

Date: 3/25/2009
Assisted By: Carol Grasis

Customer(s): LITCHFIELD HILLS AUDUBON SOCIETY
Approximate Acres: 29.4
Legal Description: Farm 561
Tract 798

Land Units:
Tract: 798 Field: 1,
Tract: 798 Field: 3,
Tract: 798 Field: 4,
Tract: 798 Field: 6



Legend

 Wigwam2009

 United States Department of Agriculture
CT Natural Resources Conservation Service
344 Merrow Rd., Suite A
Tolland, CT 06084

An Equal Opportunity Provider and Employer

1:4,000



Map Unit Legend

State of Connecticut (CT600)			
Map Unit Symbol	Map Unit Name	Acres in AOI	Percent of AOI
3	Ridgebury, Leicester, and Whitman soils, extremely stony	7.3	10.8%
13	Walpole sandy loam	6.2	9.3%
34B	Merrimac sandy loam, 3 to 8 percent slopes	7.4	10.9%
34C	Merrimac sandy loam, 8 to 15 percent slopes	2.0	2.9%
38C	Hinckley gravelly sandy loam, 3 to 15 percent slopes	2.2	3.3%
47C	Woodbridge fine sandy loam, 2 to 15 percent slopes, extremely stony	12.4	18.5%
60B	Canton and Charlton soils, 3 to 8 percent slopes	3.5	5.1%
60C	Canton and Charlton soils, 8 to 15 percent slopes	1.7	2.5%
62D	Canton and Charlton soils, 15 to 35 percent slopes, extremely stony	0.8	1.2%
73C	Charlton-Chatfield complex, 3 to 15 percent slopes, very rocky	9.5	14.1%
73E	Charlton-Chatfield complex, 15 to 45 percent slopes, very rocky	2.3	3.5%
75C	Hollis-Chatfield-Rock outcrop complex, 3 to 15 percent slopes	2.4	3.6%
84C	Paxton and Montauk fine sandy loams, 8 to 15 percent slopes	4.8	7.1%
86D	Paxton and Montauk fine sandy loams, 15 to 35 percent slopes, extremely stony	2.5	3.7%
W	Water	2.4	3.6%
Totals for Area of Interest		67.5	100.0%